

# Reliable®

## Model F1 Model F1 Recessed Standard Response Sprinklers

### The Designer® Model F1 Sprinkler

Standard Upright  
Standard Pendent  
Extended Coverage Pendent  
Conventional  
Vertical Sidewall  
Horizontal Sidewall  
– HSW 1 Deflector  
Horizontal Sidewall Extended Coverage  
– EC-6 Deflector

### The Designer® II Model F1 Recessed Sprinkler

Recessed Pendent  
Recessed Extended Coverage Pendent  
Recessed Extended Coverage Horizontal Sidewall

### Approval Organizations

1. Underwriters Laboratories Inc.
2. Underwriters' Laboratories of Canada
3. Factory Mutual Research Corp.
4. Loss Prevention Council
5. NYC BS&A No. 587-75-SA
6. Pleniére Assemblée
7. Verband der Schadenversicherer
8. NYC MEA 258-93-E

### UL Listing Category

Sprinklers, Automatic & Open (VNIV)

### Product Description

The F1 Glass Bulb Sprinkler combines the durability of a standard sprinkler with the attractive low profile of a decorative sprinkler. Whether installed on exposed piping or in an office ceiling, it is functional and attractive. The Horizontal and Vertical Sidewall Sprinklers provide an equally attractive appearance when ceiling piping cannot be used.

Beautifully versatile is the description for the Reliable Model F1 Recessed Designer glass bulb sprinkler. Recessing The Designer® enhances its already low profile decorative appearance, and facilitates a rapid and perfect installation.

Model F1 Recessed Designer's escutcheon is highly adjustable. The two piece construction makes field installation a very easy and rapid task. This also allows ceiling panels to later be removed without shutting down the fire protection system, thus facilitating maintenance of above ceiling services.

The Designer® Automatic Sprinkler utilizes a frangible glass bulb. The glass bulb consists of an accurately controlled amount of special fluid hermetically sealed inside of a precisely manufactured glass capsule. This glass bulb is specially constructed to provide fast thermal response.



Upright



Pendent



Vertical Sidewall



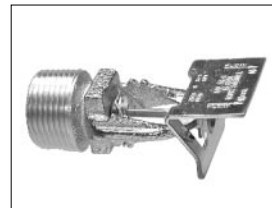
Conventional



Horizontal Sidewall



Recessed Pendent



Extended Coverage  
Horizontal Sidewall



Recessed Extended  
Coverage Horizontal  
Sidewall



Extended Coverage  
Pendent



Recessed Extended  
Coverage Pendent

At normal temperatures, the glass bulb contains the fluid in both the liquid phase and in the vapor phase. The vapor phase can be seen as a small bubble. As heat is applied, the liquid expands forcing the bubble smaller and smaller as the liquid pressure increases. Continued heating forces the liquid to push out against the bulb, causing the glass to shatter, opening the waterway and allowing the deflector to distribute the discharging water.

The F1 Sprinkler temperature rating is identified by the color of the glass bulb capsule as well as frame color where applicable.

# Model F1 Upright, Pendent & Conventional Sprinklers

Installation Wrench: Model D Sprinkler Wrench



Upright



Pendent



Conventional



Upright <sup>(2)</sup>

## Installation Data:

| Nominal Orifice   | Thread Size                       | Nominal K Factor |        | Sprinkler Height | Approval Organization | Sprinkler Identification Numbers (SIN) |         |
|---|-----------------------------------|------------------|--------|------------------|-----------------------|--|---------|
|   |                                   | US               | Metric |                  |                       | Upright                                | Pendent |
| Standard-Upright (SSU) and Pendent (SSP) Deflectors Marked to Indicate Position |                                   |                  |        |                  |                       |  |         |
| 1/2" (15mm)   | 1/2" NPT (R1/2)                   | 5.6              | 80     | 2.2" (56mm)      | 1,2,3,4,5,6,7         | R1725                                  | R1715   |
| 17/32" (20mm)   | 3/4" NPT (R3/4) <sup>(1)</sup>    | 8.0              | 115    | 2.3" (58mm)      | 1,2,3,4,7,8           | R1722                                  | R1712   |
| 1/2" (15mm) <sup>(4)</sup>  | 1/2" NPT (R1/2)                   | 5.6              | 80     | 2.2" (56mm)      | 7                     | R1795                                  | R1705   |
| 17/32" (20mm) <sup>(4)</sup>  | 3/4" NPT (R3/4)                   | 8.0              | 115    | 2.3" (58mm)      | 7                     | R1792                                  | R1702   |
| 7/16" (11mm)  | 1/2" NPT (R1/2) <sup>(2)</sup>    | 4.2              | 60     | 2.54" (65mm)     | 1,2,8                 | R1723                                  | R1713   |
| 3/8" (10mm)   | 1/2" NPT (R1/2) <sup>(2)(3)</sup> | 2.8              | 40     | 2.54" (65mm)     | 1,2,8                 | R1721                                  | R1711   |
| 10mm XLH  | R 3/8                             | 4.2              | 60     | 56.1mm           | 4,6,7                 | R1724                                  | R1714   |
| Conventional-Install in Upright or Pendent Position                             |                                   |                  |        |                  |                       |  |         |
| 10mm XLH  | R 3/8                             | 4.2              | 60     | 56.1mm           | —                     | R1774                                  |         |
| 15mm  | 1/2" NPT (R1/2)                   | 5.6              | 80     | 56.1mm           | 4,6,7                 | R1775                                  |         |
| 20mm  | 3/4" NPT (R3/4)                   | 8.0              | 115    | 58.1mm           | 4,7                   | R1772                                  |         |

<sup>(1)</sup> LPC Approval up to 286°F (141°C)

<sup>(2)</sup> Small Orifice identified by a pintle extending beyond the deflector.

<sup>(3)</sup> FM Approval for SSU only, up to 200°F (93°C).

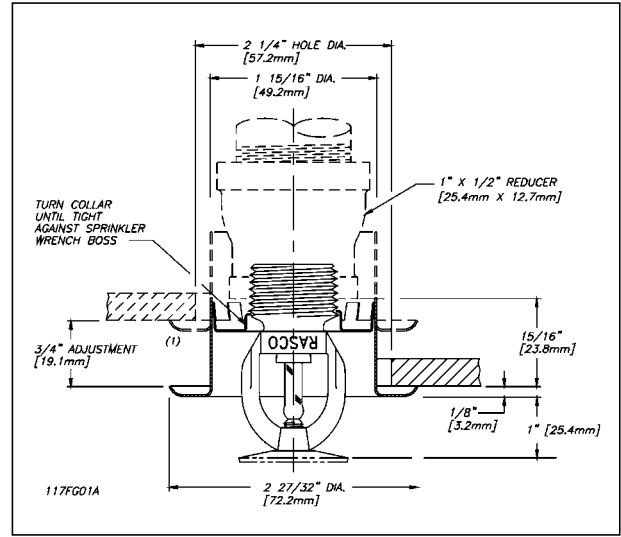
<sup>(4)</sup> VdS Approval for Intermediate Response 155°F (68°C) only.

# Model F1 Recessed Pendant Sprinkler

Installation Wrench: Model RC1 Sprinkler Wrench



F1 Recessed



(2) When installed directly into a tee, the escutcheon dimension's adjustment will be reduced.

## Installation Data:

| Nominal Orifice              | Thread Size      | Nominal K Factor |        | Sprinkler Height | Approval Organizations      | Sprinkler Identification Numbers (SIN) |
|------------------------------|------------------|------------------|--------|------------------|-----------------------------|--|
|                              |                  | US               | Metric |                  |                             |  |
| 1/2" (15mm)                  | 1/2" NPT (R 1/2) | 5.6              | 80     | 2.2" (56mm)      | 1,2,3 <sup>(1)</sup> ,4,5,7 | R1715                                  |
| 17/32" (20mm)                | 3/4" NPT (R 3/4) | 8.0              | 115    | 2.3" (58mm)      | 1,2,3 <sup>(1)</sup> ,4,8   | R1712                                  |
| 1/2" (15mm) <sup>(4)</sup>   | 1/2" NPT (R 1/2) | 5.6              | 80     | 2.2" (56mm)      | 7                           | R1705                                  |
| 17/32" (20mm) <sup>(4)</sup> | 3/4" NPT (R 3/4) | 8.0              | 115    | 2.3" (58mm)      | 7                           | R1702                                  |
| 7/16" (11mm) <sup>(2)</sup>  | 1/2" NPT (R 1/2) | 4.2              | 60     | 2.54" (65mm)     | 1,2,8                       | R1713                                  |
| 3/8" (10mm) <sup>(2)</sup>   | 1/2" NPT (R 1/2) | 2.8              | 40     | 2.54" (65mm)     | 1,2,8                       | R1711                                  |
| 10mm                         | R 3/8            | 4.2              | 60     | 56.1mm           | 4 <sup>(3)</sup> ,7         | R1714                                  |

(1) FM Approval

- Light Hazard – No Limitations.
- Ordinary Hazard – Groups 1 & 2, Wet Systems only.

(2) Identified by a pintle extending beyond the deflector.

(3) LPC Approval is XLH, OHI and OHII Occupancies only, 57°C through 93°C ratings.

(4) VdS Approval for Intermediate Response 155°F (68°C) only.

# Model F1 Vertical Sidewall Sprinkler

**Installation Wrench:** Model D Sprinkler Wrench

**Installation Position:** Upright or Pendent

**Approval Type:** Light Hazard Occupancy



Vertical Sidewall

**U.S. Patent No. 6,374,920**

## Installation Data:

| Nominal Orifice | Thread Size     | Nominal K Factor |        | Sprinkler Height | Approval Organizations       | Sprinkler Identification Numbers (SIN) |
|-----------------|-----------------|------------------|--------|------------------|------------------------------|--|
|                 |                 | US               | Metric |                  |                              |  |
| 1/2" (15mm)     | 1/2" NPT (R1/2) | 5.6              | 80     | 2.2" (56.1mm)    | 1,2,3,4 <sup>(1)</sup> , 6,8 | R1785                                  |

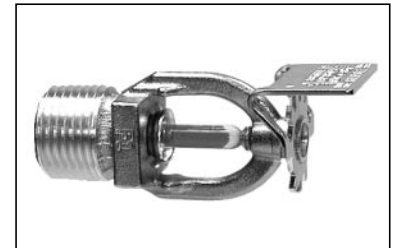
<sup>(1)</sup> LPC Approval is pendent only, 57°C through 93°C ratings.

| Sprinkler Type | Deflector to Ceiling Distance (Min. - Max.) |
|----------------|---|
| Upright        | 4"(102mm) - 12"(305mm)                      |
| Pendent        | 4"(102mm) - 12"(305mm)                      |

# Model F1 Horizontal Sidewall Sprinkler

**Deflector:** HSW 1

**Installation Wrench:** Model D Sprinkler Wrench



Horizontal Sidewall

## Installation Data:

| Nominal Orifice | Thread Size     | Nominal K Factor |        | Sprinkler Length | Approval Organizations |                 | Sprinkler Identification Numbers (SIN) |
|-----------------|-----------------|------------------|--------|------------------|------------------------|-----------------|--|
|                 |                 | US               | Metric |                  | Light Hazard           | Ordinary Hazard |  |
| 1/2" (15mm)     | 1/2" NPT (R1/2) | 5.6              | 80     | 2.63" (67mm)     | 1,2,3,5                | 1,2,5           | R1735                                  |

Note: UL and ULC Listing permits use with F1 escutcheons, light hazard only.

# Model F1 Extended Coverage Pendent Sprinkler

**Deflector:** EC Pendent

**Installation Wrench:** Model D Sprinkler Wrench

**Approval Type:** Extended Coverage — Light Hazard Occupancy



Extended Coverage Pendent

## Installation Data:

| Nominal Orifice                         | Thread Size     | Nominal K Factor |        | Sprinkler Height | Approval Organizations | Temperature Rating |        | Sprinkler Identification Numbers (SIN) |
|---|-----------------|------------------|--------|------------------|------------------------|--------------------|--------|--|
|   |                 | US               | Metric |                  |                        | °F                 | °C     |  |
| 1 <sup>7</sup> / <sub>32</sub> " (20mm) | 3/4" NPT (R3/4) | 8.0              | 115    | 2.2" (56mm)      | 1,2,8                  | 135; 155           | 57; 68 | R1742                                  |
| 1/2" (15mm)                             | 1/2" NPT (R1/2) | 5.6              | 80     | 2.2" (56mm)      | 1,2,8                  | 135; 155           | 57; 68 | R1745                                  |

| COVERAGE AREA |       |             |     |            |     |                          |           |
|---------------|-------|-------------|-----|------------|-----|--------------------------|-----------|
| Flow Rate     |       | Pressure    |     |            |     | Max. Area Width x Length |           |
|               |       | Nominal     |     |            |     |                          |           |
|               |       | K=8.0 (115) |     | K=5.6 (80) |     |                          |           |
| gpm           | L/min | psi         | bar | psi        | bar | ft. x ft.                | m x m     |
| 26            | 98.4  | 10.6        | 0,7 | 21.6       | 1,5 | 16 x 16                  | 4.9 x 4.9 |
| 33            | 125.0 | 17.0        | 1,2 | 34.7       | 2,4 | 18 x 18                  | 5.5 x 5.5 |
| 40            | 151.4 | 25.0        | 1,7 | 51.0       | 3,5 | 20 x 20                  | 6.0 x 6.0 |

# Model F1 Recessed Extended Coverage Pendent Sprinkler

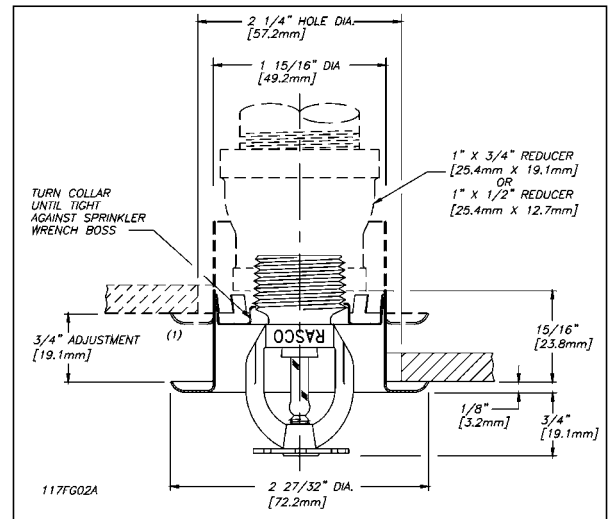
**Deflector:** EC Pendent

**Installation Wrench:** Model RC1 Sprinkler Wrench

**Approval Type:** Extended Coverage — Light Hazard Occupancy



Extended Coverage Recessed



<sup>(1)</sup> When installed directly into a tee, the escutcheon dimension's adjustment will be reduced.

## Installation Data:

| Nominal Orifice                         | Thread Size     | Nominal K Factor |        | Sprinkler Height | Approval Organizations | Temperature Rating |        | Sprinkler Identification Numbers (SIN) |
|---|-----------------|------------------|--------|------------------|------------------------|--------------------|--------|--|
|   |                 | US               | Metric |                  |                        | °F                 | °C     |  |
| 1 <sup>7</sup> / <sub>32</sub> " (20mm) | 3/4" NPT (R3/4) | 8.0              | 115    | 2.2" (56mm)      | 1,2,8                  | 135; 155           | 57; 68 | R1742                                  |
| 1/2" (15mm)                             | 1/2" NPT (R1/2) | 5.6              | 80     | 2.2" (56mm)      | 1,2,8                  | 135; 155           | 57; 68 | R1745                                  |

| COVERAGE AREA |       |             |     |            |     |                          |           |
|---------------|-------|-------------|-----|------------|-----|--------------------------|-----------|
| Flow Rate     |       | Pressure    |     |            |     | Max. Area Width x Length |           |
|               |       | Nominal     |     |            |     |                          |           |
|               |       | K=8.0 (115) |     | K=5.6 (80) |     |                          |           |
| gpm           | L/min | psi         | bar | psi        | bar | ft. x ft.                | m x m     |
| 26            | 98.4  | 10.6        | 0,7 | 21.6       | 1,5 | 16 x 16                  | 4.9 x 4.9 |
| 33            | 125.0 | 17.0        | 1,2 | 34.7       | 2,4 | 18 x 18                  | 5.5 x 5.5 |
| 40            | 151.4 | 25.0        | 1,7 | 51.0       | 3,5 | 20 x 20                  | 6.0 x 6.0 |

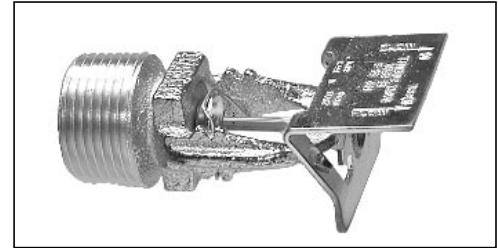
# Model F1 Extended Coverage Horizontal Sidewall Sprinkler

**Deflector:** EC-6

**Glass Bulb:** 3mm 155°F (68°C) Standard, Unless 5mm 135°F (57°C) is Specified

**Installation Wrench:** Model D Sprinkler Wrench

**Approval Type:** Extended Coverage — Light Hazard Occupancy



Extended Coverage Horizontal Sidewall

## Installation Data:

| Nominal Orifice                         | Thread Size     | K Factor |        | Sprinkler Height | Approval Organizations | Temperature Rating |    | Sprinkler Identification Numbers (SIN) |
|---|-----------------|----------|--------|------------------|------------------------|--------------------|----|--|
|   |                 | US       | Metric |                  |                        | °F                 | °C |  |
| 1 <sup>7</sup> / <sub>32</sub> " (20mm) | 3/4" NPT (R3/4) | 8.0      | 115.3  | 2.75" (70mm)     | 1,2,8                  | 135 (5mm bulb)     | 57 | R1762                                  |
|   |                 |          |        |                  |                        | 155 (3mm bulb)     | 68 |  |

| COVERAGE AREA |       |          |     |                          |           |   |
|---------------|-------|----------|-----|--------------------------|-----------|---|
| Flow Rate     |       | Pressure |     | Max. Area Width x Length |           | Deflector to Ceiling Dimensions (Min. - Max.) |
| gpm           | L/min | psi      | bar | ft. x ft.                | m x m     |   |
| 36            | 136.3 | 20.3     | 1,4 | 16 x 22                  | 4.9 x 6.7 | 4"(102mm) - 6"(152mm)                         |
| 39            | 147.6 | 23.8     | 1,6 | 16 x 24                  | 4.9 x 7.3 |   |

# Model F1 Recessed Extended Coverage Horizontal Sidewall Sprinkler

**Deflector:** EC-6

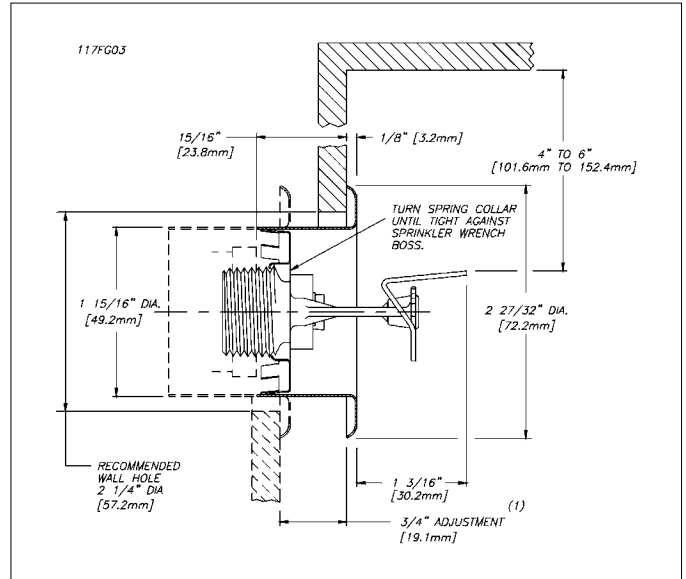
**Glass Bulb:** 3mm 155°F (68°C) Only

**Installation Wrench:** Model GFR1 Sprinkler Wrench

**Approval Type:** Extended Coverage — Light Hazard Occupancy



Recessed Extended Coverage  
Horizontal Sidewall



<sup>(1)</sup> When installed directly into a tee, the escutcheon dimension's adjustment will be reduced.

## Installation Data:

| Nominal Orifice | Thread Size     | K Factor |        | Sprinkler Height | Approval Organizations | Temperature Rating |    | Sprinkler Identification Numbers (SIN) |
|-----------------|-----------------|----------|--------|------------------|------------------------|--------------------|----|--|
|                 |                 | US       | Metric |                  |                        | °F                 | °C |  |
| 17/32" (20mm)   | 3/4" NPT (R3/4) | 8.0      | 115.3  | 2.75" (70mm)     | 1,2,8                  | 155                | 68 | R1762                                  |

| COVERAGE AREA |       |          |     |                          |           | Deflector to Ceiling Dimensions (Min. - Max.) |
|---------------|-------|----------|-----|--------------------------|-----------|---|
| Flow Rate     |       | Pressure |     | Max. Area Width x Length |           |   |
| gpm           | L/min | psi      | bar | ft. x ft.                | m x m     |   |
| 36            | 136.3 | 20.3     | 1.4 | 16 x 22                  | 4.9 x 6.7 | 4"(102mm) - 6"(152mm)                         |
| 39            | 147.6 | 23.8     | 1.6 | 16 x 24                  | 4.9 x 7.3 | 4"(102mm) - 6"(152mm)                         |

## Model F1 & F1 Recessed Sprinklers

### Application

Model F1 and F1 Recessed sprinklers are used in fixed fire protection systems: Wet, Dry, Deluge or Preaction. Care must be exercised that the orifice size, temperature rating, deflector style and sprinkler type are in accordance with the latest published standards of the National Fire Protection Association or the approving Authority Having Jurisdiction.

### Installation

Model F1 sprinklers are standard response sprinklers intended for installation as specified in NFPA 13. They must also be installed with the Model D Sprinkler Wrench specifically designed by Reliable for use with these sprinklers.

The Model F1 Recessed Sprinklers are to be installed with a maximum recess of 3/4 inch (19mm). The Model F1 Escutcheon illustrated is the only recessed escutcheon to be used with the Model F1 Pendent and EC Sprinklers. The use of any other recessed escutcheon will void all approvals and negate all warranties. When installing Model F1 Recessed Pendent, EC Pendent, and EC HSW Sprinklers, use the Model GFR1 Sprinkler Wrench. Any other type of wrench may damage these sprinklers.

Glass bulb sprinklers have orange covers to protect the bulb during the installation process. REMOVE THIS PROTECTION ONLY AFTER THE SYSTEM HAS BEEN HYDROSTATICALLY TESTED AND, WHEN APPLICABLE, THE ESCUTCHEONS HAVE BEEN INSTALLED. RASCO wrenches are designed to install sprinklers when covers are in place.

### Ordering Information

Specify:

1. Sprinkler Model
2. Sprinkler Type
3. Orifice Size
4. Deflector Type
5. Temperature Rating:  
Specify Bulb Size when ordering  
Model F1 EC HSW Sprinkler.
6. Sprinkler Finish
7. Escutcheon Finish (where applicable)

### Maintenance

The Models F1 and F1 Recessed Sprinklers should be inspected quarterly and the sprinkler system maintained in accordance with NFPA 25. Do not clean sprinklers with soap and water, ammonia or any other cleaning fluid. Remove any sprinkler which has been painted (other than factory applied) or damaged in any way. A stock of spare sprinklers should be maintained to allow quick replacement of damaged or operated sprinklers. Prior to installation, sprinklers should be maintained in the original cartons and packaging until used to minimize the potential for damage to sprinklers that would cause improper operation or non-operation.

### Temperature Ratings

| Classification            | Sprinkler Temperature |     | Maximum Ambient Temperature |     | Bulb Color |
|---------------------------|-----------------------|-----|-----------------------------|-----|------------|
|                           | °F                    | °C  | °F                          | °C  |            |
| Ordinary                  | 135                   | 57  | 100                         | 38  | Orange     |
| Ordinary                  | 155                   | 68  | 100                         | 38  | Red        |
| Intermediate              | 175                   | 79  | 150                         | 66  | Yellow     |
| Intermediate              | 200                   | 93  | 150                         | 66  | Green      |
| High <sup>(1)</sup>       | 286                   | 141 | 225                         | 107 | Blue       |
| Extra High <sup>(1)</sup> | 360                   | 182 | 300                         | 149 | Mauve      |

<sup>(1)</sup> Not Available For F1 Recessed

**Patents: U.S. Patent No. 6,374,920**  
**Applies to Model F1 Vertical Sidewall Sprinklers.**

### Finishes <sup>(1)</sup>

| Standard Finishes   |  |
|---|--|
| Sprinkler   | Escutcheon   |
| Bronze<br>Chrome<br>White Polyester Coated <sup>(3)</sup>   | Brass<br>Chrome<br>White Painted   |
| Special Application Finishes  |  |
| Sprinkler   | Escutcheon   |
| Bright Brass <sup>(2) (6)</sup><br>Black Plated <sup>(6)</sup><br>Black Paint <sup>(3) (6)</sup><br>Off White <sup>(3) (6)</sup><br>Satin Chrome<br>Lead Plated <sup>(3) (4)</sup><br>Wax Coated <sup>(3) (4) (5)</sup><br>Wax Over Lead <sup>(3) (4) (5)</sup> | Bright Brass<br>Black Plated<br>Black Paint<br>Off White<br>Satin Chrome |

<sup>(1)</sup> Other colors and finishes are available on special order.

Consult factory for details.

<sup>(2)</sup> 200°F (93°C) maximum.

<sup>(3)</sup> UL and ULC Listed, and NYC Approved Only.

<sup>(4)</sup> 155°F to 200°F (68°C to 93°C) ratings only.

<sup>(5)</sup> 286°F (141°C) Sprinklers may be coated for ambient conditions not exceeding 150°F (66°C).

<sup>(6)</sup> LPC approved for 10mm and 15mm sprinklers only.

The equipment presented in this bulletin is to be installed in accordance with the latest pertinent Standards of the National Fire Protection Association, Factory Mutual Research Corporation, or other similar organizations and also with the provisions of governmental codes or ordinances whenever applicable.

Products manufactured and distributed by Reliable have been protecting life and property for over 80 years, and are installed and serviced by the most highly qualified and reputable sprinkler contractors located throughout the United States, Canada and foreign countries

Manufactured by



**The Reliable Automatic Sprinkler Co., Inc.**

(800) 431-1588  
(800) 848-6051  
(914) 668-3470  
www.reliablesprinkler.com

Sales Offices  
Sales Fax  
Corporate Offices  
Internet Address



Revision lines indicate updated or new data.

EG printed in USA. 12/03 P/N 9999970011